



GRAND RIVER

PREPARATORY HIGH SCHOOL

School Annual Education Report (AER) Cover Letter

January 31, 2020

Dear Parents and Community Members:

We are pleased to present you with the Annual Education Report (AER) which provides key information on the 2018-19 educational progress for the Grand River Prep. The AER addresses the complex reporting information required by federal and state laws. The school's report contains information about student assessment, accountability, and teacher quality. If you have any questions about the AER, please contact the Principal at 616-261-1800 for assistance.

The AER is available for you to review electronically by visiting the following web site <http://bit.ly/2W7kYyi>, or you may review a copy in the main office at your child's school.

For the 2018-19 school year, schools were identified using definitions and labels as required in the Every Student Succeeds Act (ESSA). A Targeted Support and Improvement (TSI) school is one that has at least one underperforming student subgroup. An Additional Targeted Support (ATS) school is one that has three or more underperforming student subgroups. A Comprehensive Support and Improvement (CSI) school is one whose performance is in the lowest 5% of all schools in the state or has a graduation rate at or below 67%. Some schools are not identified with any of these labels. In these cases, no label is given.

** Note TSI and ATS definitions were changed for the 2018-19 school year per federal requirements. The new definitions are:*

- *TSI – The school has at least one subgroup performing in the bottom 25% within each applicable accountability index component.*
- *ATS – The school has met the criteria for TSI identification and has at least one subgroup performing at the same level as a CSI school.*

Our school has **not** been given one of these labels.

Grand River Prep continues to focus on language usage, reading, and math as goals for school improvement, specifically attempting to increase the number of proficient students as measured by PSAT, SAT, NWEA and school formative assessments. The administration and teachers continue to utilize NWEA assessments three times annually to identify where students are struggling and to help develop lesson plans to meet the specific needs of students. Professional development has been provided on NWEA and future professional development will be dedicated to analyzing NWEA results and developing lessons and curriculum to meet the needs of students. In conjunction with professional development, the school uses paraprofessionals and academic specialists to work with students with the most need in the building.

State law requires that we also report additional information.

1. PROCESS FOR ASSIGNING PUPILS TO THE SCHOOL

2018-19

Same as 2017-18 (described below).

2017-2018

Grand River Prep is a state-funded, public school academy. Therefore, there is no cost to attend Grand River Prep. The school is open to any child wishing to attend. Students must be age-appropriate for their respective grade, and they must reside in the state of Michigan.

By law, Grand River Prep cannot restrict enrollment based on selection criteria. Grand River Prep can, however, limit the total number of students who may attend the school. If the number of applications exceeds the number of available openings, a random lottery will determine who attends the school.

Grand River Prep's open enrollment period is from the first day of the current school year until 5:00 p.m. on the last business day of February of the current school year. During this enrollment period, all applications get equal consideration regardless of date submitted. Following the close of open enrollment, if the number of applications does not exceed the number of open seats, all students will receive a notice of acceptance into their respective grades. If applications received exceed offered seats in any grade level, a random selection process will take place for all grade levels. Names are randomly drawn until all offered seats have been filled. Any remaining names are drawn to establish waiting list priority.

Once students are enrolled and remain enrolled, they will remain eligible to be re-enrolled at the school for successive years without having to reenter the random selection process. However; they will be requested to complete a re-enrollment form by the end of the open enrollment period showing intent to re-enroll for the subsequent school year. All applicants on a waiting list must resubmit an application for the following school year during the next open enrollment period.

In order to accommodate parents who have more than one child eligible for enrollment, siblings of accepted and currently enrolled students are given preference over students who have no such siblings. Siblings of currently enrolled students at the school will be drawn first in the random selection process for offered seats. In addition, if a child is selected during the random selection process, that child's sibling will be offered the first available offered seat in his/her respective grade. Though siblings are afforded preference for offered seats, they are not given preference over a child previously enrolled.

Should offered seats remain available after the close of open enrollment, students will be accepted on a first-come, first-served basis until offered seats are no longer available.

Applications are date and time stamped upon submission, and students are admitted in the order their application is received. Applications will be accepted after offered seats are filled and will be placed on a waiting list in the order received.

2. THE STATUS OF THE 3-5 YEAR SCHOOL IMPROVEMENT PLAN

2018-19

Same as 2017-18 (described below)

2017-18

An improvement goal continues to be needed for each of the three content areas: reading, language usage, and math. Additionally, a school culture and behavior goal continues to be needed to address the needs of a growing school.

Professional development that is specific to the Positive Behavior and Interventions System will be provided to staff prior to the school year beginning. Additional "re-boot" sessions will be scheduled quarterly. These sessions will allow school leaders and staff to review data, note trends, and develop solutions. Re-teaching and clarifying school expectations can be done at this time as well, if needed.

3. A BRIEF DESCRIPTION OF EACH SPECIALIZED SCHOOL

2018-19

Same as 2017-18 (described below).

2017-2018

Grand River Preparatory High school was authorized by Grand Valley State University to begin its first year of operation in September of 2008. The school is managed by PrepNet, LLC. Grand River Prep is a full college preparatory high school serving grades 9-12. The PrepNet curriculum used by Grand River Prep is designed to not only prepare students to meet the State of Michigan's High School Content Expectations, but also to meet the rigorous expectations of the College Board's Advanced Placement curricula.

Grand River Prep has built its program based on the following core values:

Rigor: Our graduates will complete AP coursework and earn college acceptance. Our graduates will read well, write clearly and coherently, study effectively, reason soundly, and question thoughtfully. End of term comprehensive exams covering the essential learning in each core subject will determine advancement to the next level. We will give students multiple opportunities to learn and demonstrate their accomplishments.

Relevance: We will lead students toward rigorous learning by posing essential questions and developing knowledge, skills and understanding that can be transferred and applied to realistic tasks and real world settings. We endeavor to bring curiosity, challenge, pleasure, and a sense of accomplishment into our students' lives. Everything taught at our school endeavors to be a life-long skill, whether it be literary, linguistic, athletic, artistic, scientific, mathematical or historical.

Relationships: To succeed in our mission, we need the students' parents' active partnership and agreement with the school mission, which includes a personal commitment to serious academic challenge. Parents will take an active role in their child's education by providing basic needs so their child is ready to learn. By learning values and good work ethics at home, students will be prepared to succeed at school. Mutually respectful and cooperative in school and community, parents and staff will work together with the vision of helping students become productive members of Grand River Preparatory High School and society. Administrators, teachers and counselors will be visible and accessible to students.

Responsibility and Moral Focus: Our curriculum will include service learning opportunities and completion of community service projects. We encourage students to be accountable for their actions, and to be guided by the values of being respectful, truthful and ethical. Students at Grand River Prep understand that learning requires effort and hard work. Through their sense of good values, positive behavior, and moral conscience, they will hold themselves accountable for their actions. Students will have a true sense of direction, with goals and potential college and career paths clearly established. Staff will be competent, compassionate, consistent, considerate, accountable and empowered.

Special School Features: The program of study at Grand River Prep is designed to ensure each graduate:

- Successfully completes a minimum of two AP classes
- Makes successful application to college
- Completes 60 hours of community service

4. IDENTIFY HOW TO ACCESS A COPY OF THE CORE CURRICULUM, A DESCRIPTION OF ITS IMPLEMENTATION, AND AN EXPLANATION OF THE VARIANCES FROM THE STATE’S MODEL

2018-19

Same as 2017-18 (described below).

2017-18

To access a copy of the Grand River Prep standards for graduation, please use the following URL:

<http://grandriverprep.com/academic-life/curriculum/>

To access a copy of the Michigan High School Content Expectations (HSCE), please use the following URL:

http://www.michigan.gov/mde/0,4615,7-140-28753_64839_65510---,00.html

Our goal of preparing students for college success requires us to think beyond the State High School Content Expectations as we develop and then refine our curricula. Our goal is to graduate students who have experienced academic excellence and have acquired the knowledge and skills necessary to be successful in college. Thus, in each core content area, we start with the end in mind: college level work as outlined in the Advanced Placement courses. We then plan backwards, asking ourselves what foundation our students will need to be successful in these college-level courses.

We began developing our curriculum by examining the Michigan High School Content Expectations (HSCE). In each core subject offered at each grade level, HSCE standards are identified, sequenced and targeted for each unit of instruction.

Teachers created their lesson plans to reflect appropriate HSCE in order to maximize learning time and ensure alignment of instruction to the MI framework. All students were expected to reach the HSCE standards; however, accommodations were sometimes necessary to maximize learning opportunities for all students. This support came through classroom differentiation, in-class support services, targeted programmatic resources, out of class intervention, and out of school instructional opportunities—all of which were designed to accelerate student growth trajectory.

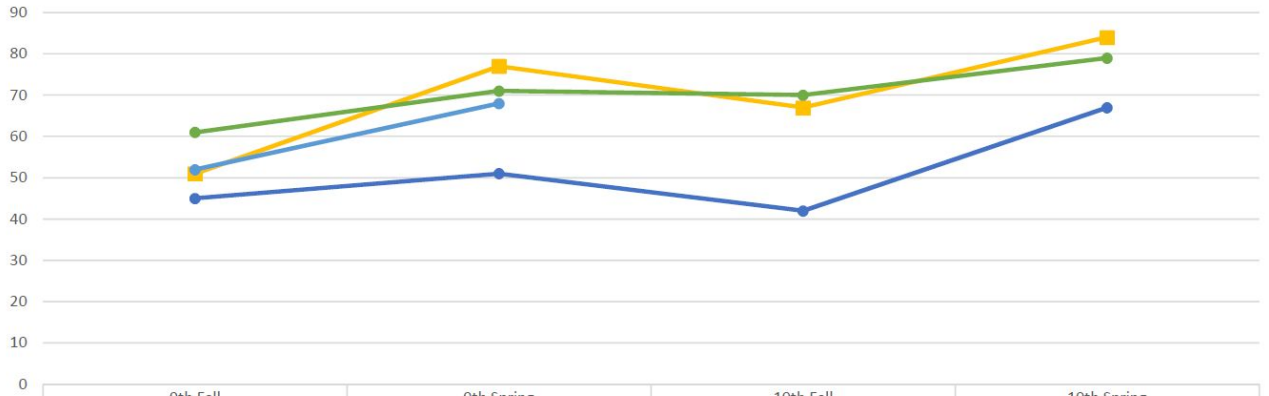
In addition to the MI framework, English classes align instruction with the national College Board Standards for College Success, and all core subjects align instruction with the Advanced Placement Course expectations. We also have integrated a Moral Focus program into our advisory classes and humanities courses. The Moral focus program is designed to support parents’ efforts to teach character at home by reinforcing and modeling universal human virtues such as compassion, respect and integrity. Additionally, teachers model behavior that exemplifies the virtue and recognize that behavior in students when they do the same.

5. THE AGGREGATE STUDENT ACHIEVEMENT RESULTS FOR ANY LOCAL COMPETENCY TESTS OR NATIONALLY NORMED ACHIEVEMENT TESTS

Grand River Preparatory High School administers the NWEA MAP assessment three times per year (fall, winter, spring) to all 9th and 10th grade students. The MAP is a computer-adaptive norm-referenced test benchmarked to national grade-level cohorts. The objective of the assessment is to measure cohort baseline proficiency and growth relative to their peers nationally.

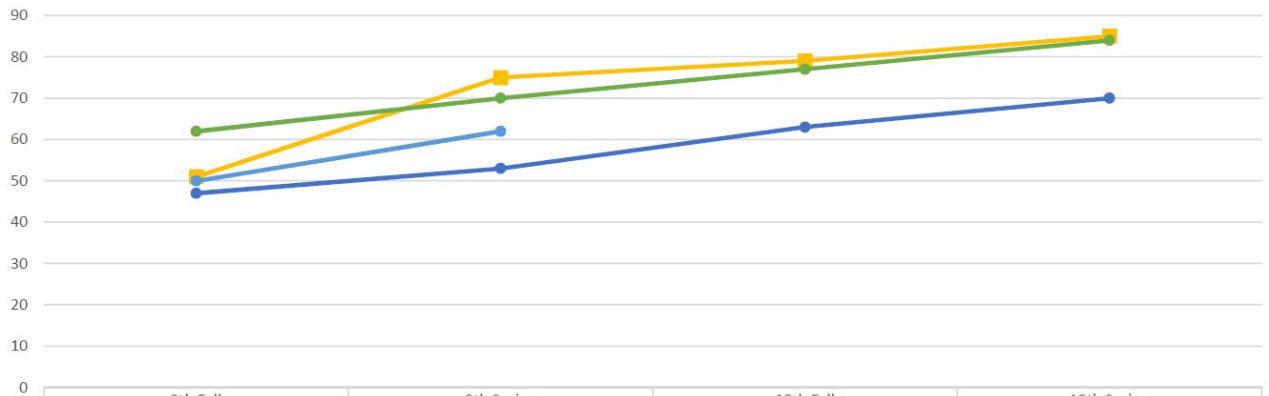
The charts below depict the progress of current and recent cohorts in 9th and 10th grade proficiency in Reading, Language Usage, and Mathematics.

Grand River Prep
Reading - NWEA National Percentile

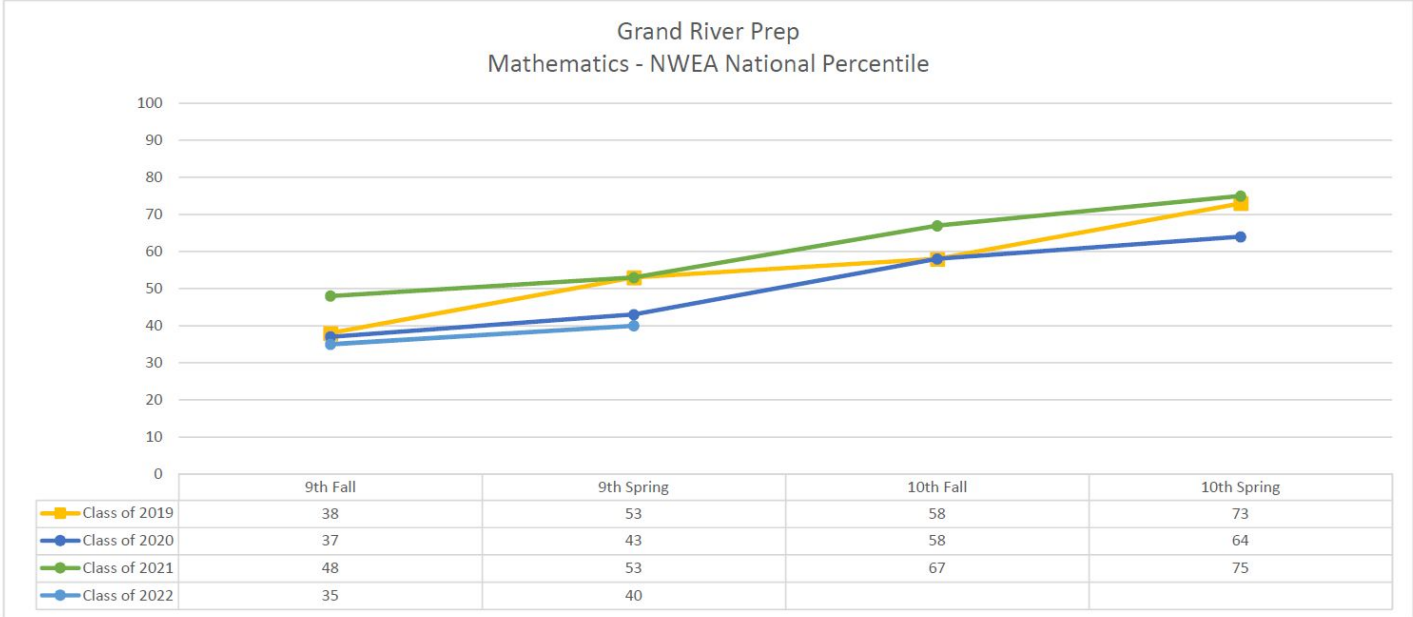


	9th Fall	9th Spring	10th Fall	10th Spring
Class of 2019	51	77	67	84
Class of 2020	45	51	42	67
Class of 2021	61	71	70	79
Class of 2022	52	68		

Grand River Prep
Language Usage - NWEA National Percentile



	9th Fall	9th Spring	10th Fall	10th Spring
Class of 2019	51	75	79	85
Class of 2020	47	53	63	70
Class of 2021	62	70	77	84
Class of 2022	50	62		



6. IDENTIFY THE NUMBER AND PERCENT OF STUDENTS REPRESENTED BY PARENTS AT PARENT-TEACHER CONFERENCES

2018-2019

Grand River Prep had 222 students represented at Parent-Teacher Conferences, representing 37% of the student population.

2017-2018

Grand River Prep had 250 students represented at Parent-Teacher Conferences, representing 42% of the student population.

7. FOR HIGH SCHOOLS, ONLY ALSO REPORT ON THE FOLLOWING:

- a. THE NUMBER AND PERCENT OF POSTSECONDARY ENROLLMENTS (DUAL ENROLLMENT)

2018-19

Grand River Prep had 12 students in dual enrollment, representing 2% of the student population.

2017-18

Grand River Prep had 36 students in dual enrollment, representing 6% of the student population.

- b. THE NUMBER OF COLLEGE EQUIVALENT COURSES OFFERED (AP/IB)

2018-19

Grand River Prep offered 16 Advanced Placement (AP) courses.

2017-18

Grand River Prep offered 16 Advanced Placement (AP) courses.

c. THE NUMBER AND PERCENTAGE OF STUDENTS ENROLLED IN COLLEGE EQUIVALENT COURSES (AP/IB)

2018-19

Grand River Prep had 424 students enrolled in Advanced Placement (AP) courses, representing 68% of the student population.

2017-18

Grand River Prep had 400 students enrolled in Advanced Placement (AP) courses, representing 65% of the student population.

d. THE NUMBER AND PERCENTAGE OF STUDENTS RECEIVING A SCORE LEADING TO COLLEGE CREDIT

2018-19

Grand River Prep had 151 students receive a score leading to college credit (3 or higher) on the AP Exam, representing 36% of students enrolled in an AP course.

2017-18

Grand River Prep had 166 students receive a score leading to college credit (3 or higher) on the AP Exam, representing 42% of students enrolled in an AP course.

The 2018-19 school year saw a sixth cohort of students successfully graduate from Grand River Preparatory High School's rigorous, college prep program with all students being accepted to a four year college or university.

Sincerely,



Koree Woodward
Principal

Annual Education Report Grand River Preparatory High School (09911)

M-STEP Grades 3-11

Subject	Grade	Student Group	School Year	State Percent Student's Proficient	State Number Student's Proficient	District Percent Student's Proficient	District Number Student's Proficient	School Percent Student's Proficient	School Number Student's Proficient	Percent Advanced	Number Advanced	Percent Proficient	Number Proficient	Percent Partially Proficient	Number Partially Proficient	Percent Not Proficient	Number Not Proficient
Social Studies	11th Grade Content	All Students	2017-18	48.5%	50,865	40.0%	50	40.0%	50	11.2%	14	28.8%	36	50.4%	63	9.6%	12
Social Studies	11th Grade Content	All Students	2018-19	46.6%	47,628	39.6%	53	39.6%	53	11.2%	15	28.4%	38	51.5%	69	9.0%	12
Social Studies	11th Grade Content	American Indian or Alaska Native	2017-18	43.3%	274	*	*	*	*	*	*	*	*	*	*	*	*
Social Studies	11th Grade Content	American Indian or Alaska Native	2018-19	38.5%	258	*	*	*	*	*	*	*	*	*	*	*	*
Social Studies	11th Grade Content	Asian	2017-18	65.3%	2,493	*	*	*	*	*	*	*	*	*	*	*	*
Social Studies	11th Grade Content	Asian	2018-19	64.6%	2,559	*	*	*	*	*	*	*	*	*	*	*	*
Social Studies	11th Grade Content	Black or African American	2017-18	21.1%	3,335	23.5%	8	23.5%	8	10%	<3	*	*	64.7%	22	11.8%	4
Social Studies	11th Grade Content	Black or African American	2018-19	20.1%	3,081	48.0%	12	48.0%	12	20%	<3	*	*	*	*	20%	1

Annual Education Report Grand River Preparatory High School (09911)

M-STEP Grades 3-11

Subject	Grade	Student Group	School Year	State Percent Students Proficient	State Number Students Proficient	District Percent Students Proficient	District Number Students Proficient	School Percent Students Proficient	School Number Students Proficient	Percent Advanced	Number Advanced	Percent Proficient	Number Proficient	Percent Partially Proficient	Number Partially Proficient	Percent Not Proficient	Number Not Proficient
Social Studies	11th Grade Content	Hispanic of Any Race	2017-18	36.2%	2,582	36.2%	17	36.2%	17	12.8%	6	23.4%	11	48.9%	23	14.9%	7
Social Studies	11th Grade Content	Hispanic of Any Race	2018-19	32.8%	2,336	22.0%	13	22.0%	13	10%	<3	*	*	62.7%	37	15.3%	9
Social Studies	11th Grade Content	Native Hawaiian or Other Pacific Islander	2018-19	33.3%	30	*	*	*	*	*	*	*	*	*	*	*	*
Social Studies	11th Grade Content	Two or More Races	2017-18	46.3%	1,368	*	*	*	*	*	*	*	*	*	*	*	*
Social Studies	11th Grade Content	Two or More Races	2018-19	46.1%	1,415	*	*	*	*	*	*	*	*	*	*	*	*
Social Studies	11th Grade Content	White	2017-18	54.8%	40,773	68.8%	22	68.8%	22	21.9%	7	46.9%	15	*	*	10%	1
Social Studies	11th Grade Content	White	2018-19	52.6%	37,949	60.0%	21	60.0%	21	28.6%	10	31.4%	11	*	*	10%	2
Social Studies	11th Grade Content	Female	2017-18	45.4%	23,703	34.8%	24	34.8%	24	7.2%	5	27.5%	19	55.1%	38	10.1%	7
Social Studies	11th Grade Content	Female	2018-19	44.1%	22,547	35.2%	25	35.2%	25	7.0%	5	28.2%	20	*	43	5%	3

Annual Education Report Grand River Preparatory High School (09911)

M-STEP Grades 3-11

Subject	Grade	Student Group	School Year	State Percent Students Proficient	State Number Students Proficient	District Percent Students Proficient	District Number Students Proficient	School Percent Students Proficient	School Number Students Proficient	Percent Advanced	Number Advanced	Percent Proficient	Number Proficient	Percent Partially Proficient	Number Partially Proficient	Percent Not Proficient	Number Not Proficient
Social Studies	11th Grade Content	Male	2017-18	51.6%	27,162	46.4%	26	46.4%	26	16.1%	9	30.4%	17	*	25	10%	5
Social Studies	11th Grade Content	Male	2018-19	49.1%	25,081	44.4%	28	44.4%	28	15.9%	10	28.6%	18	41.3%	26	14.3%	9
Social Studies	11th Grade Content	Economically Disadvantaged	2017-18	32.5%	14,489	36.8%	25	36.8%	25	11.8%	8	25.0%	17	50.0%	34	13.2%	9
Social Studies	11th Grade Content	Economically Disadvantaged	2018-19	30.6%	13,131	35.0%	28	35.0%	28	5%	4	*	24	52.5%	42	12.5%	10
Social Studies	11th Grade Content	English Learners	2017-18	11.1%	491	20%	<3	20%	*	20%	<3	20%	<3	*	13	*	5
Social Studies	11th Grade Content	English Learners	2018-19	10.3%	516	11.8%	4	11.8%	4	10%	<3	*	*	64.7%	22	23.5%	8
Social Studies	11th Grade Content	Students With Disabilities	2017-18	16.2%	1,531	*	*	*	*	*	*	*	*	*	*	*	*
Social Studies	11th Grade Content	Students With Disabilities	2018-19	16.1%	1,512	50%	<3	50%	*	50%	<3	50%	<3	*	*	*	2

Annual Education Report Grand River Preparatory High School (09911)

M-STEP Grades 3-11

Subject	Grade	Student Group	School Year	State Percent Student Proficient	State Number Student Proficient	District Percent Student Proficient	District Number Student Proficient	School Percent Student Proficient	School Number Student Proficient	Percent Advanced	Number Advanced	Percent Proficient	Number Proficient	Percent Partially Proficient	Number Partially Proficient	Percent Not Proficient	Number Not Proficient
Social Studies	11th Grade Content	Homeless	2017-18	24.6%	357	*	*	*	*	*	*	*	*	*	*	*	*

Annual Education Report Grand River Preparatory High School (09911)

SAT

Location Name	School Year	Subject	Student Group	Mean SAT Score	Benchmark	Met or Exceeded	% Met or Exceeded	Did Not Meet	% Did Not Meet	Number Assessed
Grand River Preparatory High School	2017-18	Total Score	All Students	987.5	N/A	37	29.4%	89	70.6%	126
Grand River Preparatory High School	2018-19	Total Score	All Students	940.5	N/A	30	22.4%	104	77.6%	134
Grand River Preparatory High School	2017-18	Total Score	American Indian or Alaska Native	*	N/A	*	*	*	*	<10
Grand River Preparatory High School	2018-19	Total Score	American Indian or Alaska Native	*	N/A	*	*	*	*	<10
Grand River Preparatory High School	2017-18	Total Score	Asian	*	N/A	*	*	*	*	<10
Grand River Preparatory High School	2018-19	Total Score	Asian	*	N/A	*	*	*	*	<10
Grand River Preparatory High School	2017-18	Total Score	Black or African American	893.4	N/A	5	14.3%	30	85.7%	35
Grand River Preparatory High School	2018-19	Total Score	Black or African American	895.6	N/A	<3	20%	*	80%	25
Grand River Preparatory High School	2017-18	Total Score	Hispanic of Any Race	964.0	N/A	7	14.9%	40	85.1%	47
Grand River Preparatory High School	2018-19	Total Score	Hispanic of Any Race	874.1	N/A	7	12.1%	51	87.9%	58

Annual Education Report Grand River Preparatory High School (09911)

SAT

Location Name	School Year	Subject	Student Group	Mean SAT Score	Benchmark	Met or Exceeded	% Met or Exceeded	Did Not Meet	% Did Not Meet	Number Assessed
Grand River Preparatory High School	2018-19	Total Score	Native Hawaiian or Other Pacific Islander	*	N/A	*	*	*	*	<10
Grand River Preparatory High School	2017-18	Total Score	Two or More Races	*	N/A	*	*	*	*	<10
Grand River Preparatory High School	2018-19	Total Score	Two or More Races	*	N/A	*	*	*	*	<10
Grand River Preparatory High School	2017-18	Total Score	White	1123.1	N/A	20	62.5%	12	37.5%	32
Grand River Preparatory High School	2018-19	Total Score	White	1070.0	N/A	18	51.4%	17	48.6%	35
Grand River Preparatory High School	2017-18	Total Score	Female	983.5	N/A	19	27.5%	50	72.5%	69
Grand River Preparatory High School	2018-19	Total Score	Female	955.8	N/A	18	25.0%	54	75.0%	72
Grand River Preparatory High School	2017-18	Total Score	Male	992.5	N/A	18	31.6%	39	68.4%	57
Grand River Preparatory High School	2018-19	Total Score	Male	922.7	N/A	12	19.4%	50	80.6%	62
Grand River Preparatory High School	2017-18	Total Score	Economically Disadvantaged	969.0	N/A	16	23.2%	53	76.8%	69

Annual Education Report Grand River Preparatory High School (09911)

SAT

Location Name	School Year	Subject	Student Group	Mean SAT Score	Benchmark	Met or Exceeded	% Met or Exceeded	Did Not Meet	% Did Not Meet	Number Assessed
Grand River Preparatory High School	2018-19	Total Score	Economically Disadvantaged	891.5	N/A	10	12.5%	70	87.5%	80
Grand River Preparatory High School	2017-18	Total Score	Not Economically Disadvantaged	1010.0	N/A	21	36.8%	36	63.2%	57
Grand River Preparatory High School	2018-19	Total Score	Not Economically Disadvantaged	1013.1	N/A	20	37.0%	34	63.0%	54
Grand River Preparatory High School	2017-18	Total Score	English Learners	876.3	N/A	<3	20%	*	80%	19
Grand River Preparatory High School	2018-19	Total Score	English Learners	797.0	N/A	<3	10%	*	90%	33
Grand River Preparatory High School	2017-18	Total Score	Not English Learners	1007.3	N/A	36	33.6%	71	66.4%	107
Grand River Preparatory High School	2018-19	Total Score	Not English Learners	987.4	N/A	28	27.7%	73	72.3%	101
Grand River Preparatory High School	2017-18	Total Score	Not Migrant	987.5	N/A	37	29.4%	89	70.6%	126
Grand River Preparatory High School	2018-19	Total Score	Not Migrant	940.5	N/A	30	22.4%	104	77.6%	134
Grand River Preparatory High School	2017-18	Total Score	Students With Disabilities	*	N/A	*	*	*	*	<10
Grand River Preparatory High School	2018-19	Total Score	Students With Disabilities	776.4	N/A	<3	50%	*	50%	14

Annual Education Report Grand River Preparatory High School (09911)

SAT

Location Name	School Year	Subject	Student Group	Mean SAT Score	Benchmark	Met or Exceeded	% Met or Exceeded	Did Not Meet	% Did Not Meet	Number Assessed
Grand River Preparatory High School	2017-18	Total Score	Students Without Disabilities	996.5	N/A	37	30.6%	84	69.4%	121
Grand River Preparatory High School	2018-19	Total Score	Students Without Disabilities	959.7	N/A	30	25.0%	90	75.0%	120
Grand River Preparatory High School	2017-18	Total Score	Homeless	*	N/A	*	*	*	*	<10
Grand River Preparatory High School	2017-18	Total Score	Not Homeless	984.8	N/A	36	29.3%	87	70.7%	123
Grand River Preparatory High School	2018-19	Total Score	Not Homeless	940.5	N/A	30	22.4%	104	77.6%	134
Grand River Preparatory High School	2017-18	Total Score	Not Foster Care	987.5	N/A	37	29.4%	89	70.6%	126
Grand River Preparatory High School	2018-19	Total Score	Not Foster Care	940.5	N/A	30	22.4%	104	77.6%	134
Grand River Preparatory High School	2017-18	Total Score	Not Military Connected	987.5	N/A	37	29.4%	89	70.6%	126
Grand River Preparatory High School	2018-19	Total Score	Not Military Connected	940.5	N/A	30	22.4%	104	77.6%	134
Grand River Preparatory High School	2017-18	Evidence-Based Reading and Writing	All Students	500.0	480	67	53.2%	59	46.8%	126
Grand River Preparatory High School	2018-19	Evidence-Based Reading and Writing	All Students	479.0	480	61	45.5%	73	54.5%	134

Annual Education Report Grand River Preparatory High School (09911)

SAT

Location Name	School Year	Subject	Student Group	Mean SAT Score	Benchmark	Met or Exceeded	% Met or Exceeded	Did Not Meet	% Did Not Meet	Number Assessed
Grand River Preparatory High School	2017-18	Evidence-Based Reading and Writing	American Indian or Alaska Native	*	480	*	*	*	*	<10
Grand River Preparatory High School	2018-19	Evidence-Based Reading and Writing	American Indian or Alaska Native	*	480	*	*	*	*	<10
Grand River Preparatory High School	2017-18	Evidence-Based Reading and Writing	Asian	*	480	*	*	*	*	<10
Grand River Preparatory High School	2018-19	Evidence-Based Reading and Writing	Asian	*	480	*	*	*	*	<10
Grand River Preparatory High School	2017-18	Evidence-Based Reading and Writing	Black or African American	450.6	480	11	31.4%	24	68.6%	35
Grand River Preparatory High School	2018-19	Evidence-Based Reading and Writing	Black or African American	464.8	480	9	36.0%	16	64.0%	25
Grand River Preparatory High School	2017-18	Evidence-Based Reading and Writing	Hispanic of Any Race	493.2	480	22	46.8%	25	53.2%	47
Grand River Preparatory High School	2018-19	Evidence-Based Reading and Writing	Hispanic of Any Race	438.4	480	17	29.3%	41	70.7%	58
Grand River Preparatory High School	2018-19	Evidence-Based Reading and Writing	Native Hawaiian or Other Pacific Islander	*	480	*	*	*	*	<10
Grand River Preparatory High School	2017-18	Evidence-Based Reading and Writing	Two or More Races	*	480	*	*	*	*	<10

Annual Education Report Grand River Preparatory High School (09911)

SAT

Location Name	School Year	Subject	Student Group	Mean SAT Score	Benchmark	Met or Exceeded	% Met or Exceeded	Did Not Meet	% Did Not Meet	Number Assessed
Grand River Preparatory High School	2018-19	Evidence-Based Reading and Writing	Two or More Races	*	480	*	*	*	*	<10
Grand River Preparatory High School	2017-18	Evidence-Based Reading and Writing	White	569.1	480	27	84.4%	5	15.6%	32
Grand River Preparatory High School	2018-19	Evidence-Based Reading and Writing	White	551.1	480	25	71.4%	10	28.6%	35
Grand River Preparatory High School	2017-18	Evidence-Based Reading and Writing	Female	497.8	480	38	55.1%	31	44.9%	69
Grand River Preparatory High School	2018-19	Evidence-Based Reading and Writing	Female	491.8	480	39	54.2%	33	45.8%	72
Grand River Preparatory High School	2017-18	Evidence-Based Reading and Writing	Male	502.6	480	29	50.9%	28	49.1%	57
Grand River Preparatory High School	2018-19	Evidence-Based Reading and Writing	Male	464.0	480	22	35.5%	40	64.5%	62
Grand River Preparatory High School	2017-18	Evidence-Based Reading and Writing	Economically Disadvantaged	493.5	480	35	50.7%	34	49.3%	69
Grand River Preparatory High School	2018-19	Evidence-Based Reading and Writing	Economically Disadvantaged	453.8	480	27	33.8%	53	66.3%	80
Grand River Preparatory High School	2017-18	Evidence-Based Reading and Writing	Not Economically Disadvantaged	507.9	480	32	56.1%	25	43.9%	57
Grand River Preparatory High School	2018-19	Evidence-Based Reading and Writing	Not Economically Disadvantaged	516.3	480	34	63.0%	20	37.0%	54

Annual Education Report Grand River Preparatory High School (09911)

SAT

Location Name	School Year	Subject	Student Group	Mean SAT Score	Benchmark	Met or Exceeded	% Met or Exceeded	Did Not Meet	% Did Not Meet	Number Assessed
Grand River Preparatory High School	2017-18	Evidence-Based Reading and Writing	English Learners	446.3	480	6	31.6%	13	68.4%	19
Grand River Preparatory High School	2018-19	Evidence-Based Reading and Writing	English Learners	405.8	480	4	12.1%	29	87.9%	33
Grand River Preparatory High School	2017-18	Evidence-Based Reading and Writing	Not English Learners	509.5	480	61	57.0%	46	43.0%	107
Grand River Preparatory High School	2018-19	Evidence-Based Reading and Writing	Not English Learners	502.9	480	57	56.4%	44	43.6%	101
Grand River Preparatory High School	2017-18	Evidence-Based Reading and Writing	Not Migrant	500.0	480	67	53.2%	59	46.8%	126
Grand River Preparatory High School	2018-19	Evidence-Based Reading and Writing	Not Migrant	479.0	480	61	45.5%	73	54.5%	134
Grand River Preparatory High School	2017-18	Evidence-Based Reading and Writing	Students With Disabilities	*	480	*	*	*	*	<10
Grand River Preparatory High School	2018-19	Evidence-Based Reading and Writing	Students With Disabilities	388.6	480	<3	50%	*	50%	14
Grand River Preparatory High School	2017-18	Evidence-Based Reading and Writing	Students Without Disabilities	504.8	480	67	55.4%	54	44.6%	121
Grand River Preparatory High School	2018-19	Evidence-Based Reading and Writing	Students Without Disabilities	489.5	480	61	50.8%	59	49.2%	120
Grand River Preparatory High School	2017-18	Evidence-Based Reading and Writing	Homeless	*	480	*	*	*	*	<10

Annual Education Report Grand River Preparatory High School (09911)

SAT

Location Name	School Year	Subject	Student Group	Mean SAT Score	Benchmark	Met or Exceeded	% Met or Exceeded	Did Not Meet	% Did Not Meet	Number Assessed
Grand River Preparatory High School	2017-18	Evidence-Based Reading and Writing	Not Homeless	498.3	480	64	52.0%	59	48.0%	123
Grand River Preparatory High School	2018-19	Evidence-Based Reading and Writing	Not Homeless	479.0	480	61	45.5%	73	54.5%	134
Grand River Preparatory High School	2017-18	Evidence-Based Reading and Writing	Not Foster Care	500.0	480	67	53.2%	59	46.8%	126
Grand River Preparatory High School	2018-19	Evidence-Based Reading and Writing	Not Foster Care	479.0	480	61	45.5%	73	54.5%	134
Grand River Preparatory High School	2017-18	Evidence-Based Reading and Writing	Not Military Connected	500.0	480	67	53.2%	59	46.8%	126
Grand River Preparatory High School	2018-19	Evidence-Based Reading and Writing	Not Military Connected	479.0	480	61	45.5%	73	54.5%	134
Grand River Preparatory High School	2017-18	Mathematics	All Students	487.5	530	39	31.0%	87	69.0%	126
Grand River Preparatory High School	2018-19	Mathematics	All Students	461.6	530	32	23.9%	102	76.1%	134
Grand River Preparatory High School	2017-18	Mathematics	American Indian or Alaska Native	*	530	*	*	*	*	<10
Grand River Preparatory High School	2018-19	Mathematics	American Indian or Alaska Native	*	530	*	*	*	*	<10
Grand River Preparatory High School	2017-18	Mathematics	Asian	*	530	*	*	*	*	<10

Annual Education Report Grand River Preparatory High School (09911)

SAT

Location Name	School Year	Subject	Student Group	Mean SAT Score	Benchmark	Met or Exceeded	% Met or Exceeded	Did Not Meet	% Did Not Meet	Number Assessed
Grand River Preparatory High School	2018-19	Mathematics	Asian	*	530	*	*	*	*	<10
Grand River Preparatory High School	2017-18	Mathematics	Black or African American	442.9	530	6	17.1%	29	82.9%	35
Grand River Preparatory High School	2018-19	Mathematics	Black or African American	430.8	530	<3	20%	*	80%	25
Grand River Preparatory High School	2017-18	Mathematics	Hispanic of Any Race	470.9	530	8	17.0%	39	83.0%	47
Grand River Preparatory High School	2018-19	Mathematics	Hispanic of Any Race	435.7	530	8	13.8%	50	86.2%	58
Grand River Preparatory High School	2018-19	Mathematics	Native Hawaiian or Other Pacific Islander	*	530	*	*	*	*	<10
Grand River Preparatory High School	2017-18	Mathematics	Two or More Races	*	530	*	*	*	*	<10
Grand River Preparatory High School	2018-19	Mathematics	Two or More Races	*	530	*	*	*	*	<10
Grand River Preparatory High School	2017-18	Mathematics	White	554.1	530	20	62.5%	12	37.5%	32
Grand River Preparatory High School	2018-19	Mathematics	White	518.9	530	19	54.3%	16	45.7%	35

Annual Education Report Grand River Preparatory High School (09911)

SAT

Location Name	School Year	Subject	Student Group	Mean SAT Score	Benchmark	Met or Exceeded	% Met or Exceeded	Did Not Meet	% Did Not Meet	Number Assessed
Grand River Preparatory High School	2017-18	Mathematics	Female	485.7	530	21	30.4%	48	69.6%	69
Grand River Preparatory High School	2018-19	Mathematics	Female	464.0	530	18	25.0%	54	75.0%	72
Grand River Preparatory High School	2017-18	Mathematics	Male	489.8	530	18	31.6%	39	68.4%	57
Grand River Preparatory High School	2018-19	Mathematics	Male	458.7	530	14	22.6%	48	77.4%	62
Grand River Preparatory High School	2017-18	Mathematics	Economically Disadvantaged	475.5	530	18	26.1%	51	73.9%	69
Grand River Preparatory High School	2018-19	Mathematics	Economically Disadvantaged	437.8	530	11	13.8%	69	86.3%	80
Grand River Preparatory High School	2017-18	Mathematics	Not Economically Disadvantaged	502.1	530	21	36.8%	36	63.2%	57
Grand River Preparatory High School	2018-19	Mathematics	Not Economically Disadvantaged	496.9	530	21	38.9%	33	61.1%	54
Grand River Preparatory High School	2017-18	Mathematics	English Learners	430.0	530	<3	20%	*	80%	19
Grand River Preparatory High School	2018-19	Mathematics	English Learners	391.2	530	<3	10%	*	90%	33
Grand River Preparatory High School	2017-18	Mathematics	Not English Learners	497.8	530	38	35.5%	69	64.5%	107

Annual Education Report Grand River Preparatory High School (09911)

SAT

Location Name	School Year	Subject	Student Group	Mean SAT Score	Benchmark	Met or Exceeded	% Met or Exceeded	Did Not Meet	% Did Not Meet	Number Assessed
Grand River Preparatory High School	2018-19	Mathematics	Not English Learners	484.6	530	30	29.7%	71	70.3%	101
Grand River Preparatory High School	2017-18	Mathematics	Not Migrant	487.5	530	39	31.0%	87	69.0%	126
Grand River Preparatory High School	2018-19	Mathematics	Not Migrant	461.6	530	32	23.9%	102	76.1%	134
Grand River Preparatory High School	2017-18	Mathematics	Students With Disabilities	*	530	*	*	*	*	<10
Grand River Preparatory High School	2018-19	Mathematics	Students With Disabilities	387.9	530	<3	50%	*	50%	14
Grand River Preparatory High School	2017-18	Mathematics	Students Without Disabilities	491.7	530	39	32.2%	82	67.8%	121
Grand River Preparatory High School	2018-19	Mathematics	Students Without Disabilities	470.2	530	32	26.7%	88	73.3%	120
Grand River Preparatory High School	2017-18	Mathematics	Homeless	*	530	*	*	*	*	<10
Grand River Preparatory High School	2017-18	Mathematics	Not Homeless	486.5	530	38	30.9%	85	69.1%	123
Grand River Preparatory High School	2018-19	Mathematics	Not Homeless	461.6	530	32	23.9%	102	76.1%	134
Grand River Preparatory High School	2017-18	Mathematics	Not Foster Care	487.5	530	39	31.0%	87	69.0%	126

Annual Education Report Grand River Preparatory High School (09911)

SAT

Location Name	School Year	Subject	Student Group	Mean SAT Score	Benchmark	Met or Exceeded	% Met or Exceeded	Did Not Meet	% Did Not Meet	Number Assessed
Grand River Preparatory High School	2018-19	Mathematics	Not Foster Care	461.6	530	32	23.9%	102	76.1%	134
Grand River Preparatory High School	2017-18	Mathematics	Not Military Connected	487.5	530	39	31.0%	87	69.0%	126
Grand River Preparatory High School	2018-19	Mathematics	Not Military Connected	461.6	530	32	23.9%	102	76.1%	134

Annual Education Report Grand River Preparatory High School (09911)

MI -Access Functional Independence

Subject	Grade	Student Group	School Year	State Percent Students Proficient	District Percent Students Proficient	School Percent Students Proficient	Percent Surpassed	Percent Attained	Percent Emerging
ELA	11th Grade Content	All Students	2018-19	81.9%	*	*	*	*	*
Mathematics	11th Grade Content	All Students	2018-19	56.7%	*	*	*	*	*
Science	11th Grade Content	All Students	2018-19	49.1%	*	*	*	*	*
Social Studies	11th Grade Content	All Students	2018-19	36.4%	*	*	*	*	*
ELA	11th Grade Content	Asian	2018-19	65.0%	*	*	*	*	*
Mathematics	11th Grade Content	Asian	2018-19	47.6%	*	*	*	*	*
Science	11th Grade Content	Asian	2018-19	50.0%	*	*	*	*	*
Social Studies	11th Grade Content	Asian	2018-19	40.9%	*	*	*	*	*
ELA	11th Grade Content	Female	2018-19	83.9%	*	*	*	*	*
Mathematics	11th Grade Content	Female	2018-19	51.9%	*	*	*	*	*
Science	11th Grade Content	Female	2018-19	47.4%	*	*	*	*	*
Social Studies	11th Grade Content	Female	2018-19	32.6%	*	*	*	*	*

Annual Education Report Grand River Preparatory High School (09911)

MI -Access Supported Independence

Subject	Grade	Student Group	School Year	State Percent Students Proficient	District Percent Students Proficient	School Percent Students Proficient	Percent Surpassed	Percent Attained	Percent Emerging
---------	-------	---------------	-------------	-----------------------------------	--------------------------------------	------------------------------------	-------------------	------------------	------------------

No Data to Display

Annual Education Report Grand River Preparatory High School (09911)

MI -Access Participation

Subject	Grade	Student Group	School Year	State Percent Students Proficient	District Percent Students Proficient	School Percent Students Proficient	Percent Surpassed	Percent Attained	Percent Emerging
---------	-------	---------------	-------------	-----------------------------------	--------------------------------------	------------------------------------	-------------------	------------------	------------------

No Data to Display

Annual Education Report Grand River Preparatory High School (09911)

MI-Access Students Who Took MI-Access, by Test Type

Subject	Grade	Student Group	School Year	Number Tested - M-STEP, SAT or MI-Access	Number Tested - Any MI-Access	Percent Tested - Any MI-Access	Number Tested - Functional Independence	Percent Tested - Functional Independence	Number Tested - Supported Independence	Percent Tested - Supported Independence	Number Tested - Participation	Percent Tested - Participation
ELA	All Grades (Combined)	All Students	2017-18	126	<10	*	*	*	*	*	*	*
ELA	All Grades (Combined)	All Students	2018-19	136	<10	*	*	*	*	*	*	*
ELA	All Grades (Combined)	American Indian or Alaska Native	2017-18	<10	*	*	*	*	*	*	*	*
ELA	All Grades (Combined)	American Indian or Alaska Native	2018-19	<10	*	*	*	*	*	*	*	*
ELA	All Grades (Combined)	Asian	2017-18	<10	*	*	*	*	*	*	*	*
ELA	All Grades (Combined)	Asian	2018-19	<10	*	*	*	*	*	*	*	*
ELA	All Grades (Combined)	Black or African American	2017-18	35	<10	*	*	*	*	*	*	*
ELA	All Grades (Combined)	Black or African American	2018-19	25	<10	*	*	*	*	*	*	*
ELA	All Grades (Combined)	Hispanic of Any Race	2017-18	47	<10	*	*	*	*	*	*	*
ELA	All Grades (Combined)	Hispanic of Any Race	2018-19	59	<10	*	*	*	*	*	*	*
ELA	All Grades (Combined)	Native Hawaiian or Other Pacific Islander	2018-19	<10	*	*	*	*	*	*	*	*

Annual Education Report Grand River Preparatory High School (09911)

MI-Access Students Who Took MI-Access, by Test Type

Subject	Grade	Student Group	School Year	Number Tested - M-STEP, SAT or MI-Access	Number Tested - Any MI-Access	Percent Tested - Any MI-Access	Number Tested - Functional Independence	Percent Tested - Functional Independence	Number Tested - Supported Independence	Percent Tested - Supported Independence	Number Tested - Participation	Percent Tested - Participation
ELA	All Grades (Combined)	Two or More Races	2018-19	<10	*	*	*	*	*	*	*	*
ELA	All Grades (Combined)	Two or More Races	2017-18	<10	*	*	*	*	*	*	*	*
ELA	All Grades (Combined)	White	2018-19	35	<10	*	*	*	*	*	*	*
ELA	All Grades (Combined)	White	2017-18	32	<10	*	*	*	*	*	*	*
ELA	All Grades (Combined)	Female	2017-18	69	<10	*	*	*	*	*	*	*
ELA	All Grades (Combined)	Female	2018-19	73	<10	*	*	*	*	*	*	*
ELA	All Grades (Combined)	Male	2017-18	57	<10	*	*	*	*	*	*	*
ELA	All Grades (Combined)	Male	2018-19	63	<10	*	*	*	*	*	*	*
ELA	All Grades (Combined)	Economically Disadvantaged	2017-18	69	<10	*	*	*	*	*	*	*
ELA	All Grades (Combined)	Economically Disadvantaged	2018-19	80	<10	*	*	*	*	*	*	*
ELA	All Grades (Combined)	Not Economically Disadvantaged	2018-19	56	<10	*	*	*	*	*	*	*

Annual Education Report Grand River Preparatory High School (09911)

MI-Access Students Who Took MI-Access, by Test Type

Subject	Grade	Student Group	School Year	Number Tested - M-STEP, SAT or MI-Access	Number Tested - Any MI-Access	Percent Tested - Any MI-Access	Number Tested - Functional Independence	Percent Tested - Functional Independence	Number Tested - Supported Independence	Percent Tested - Supported Independence	Number Tested - Participation	Percent Tested - Participation
ELA	All Grades (Combined)	Not Economically Disadvantaged	2017-18	57	<10	*	*	*	*	*	*	*
ELA	All Grades (Combined)	English Learners	2018-19	34	<10	*	*	*	*	*	*	*
ELA	All Grades (Combined)	English Learners	2017-18	19	<10	*	*	*	*	*	*	*
ELA	All Grades (Combined)	Not English Learners	2017-18	107	<10	*	*	*	*	*	*	*
ELA	All Grades (Combined)	Not English Learners	2018-19	102	<10	*	*	*	*	*	*	*
ELA	All Grades (Combined)	Not Migrant	2017-18	126	<10	*	*	*	*	*	*	*
ELA	All Grades (Combined)	Not Migrant	2018-19	136	<10	*	*	*	*	*	*	*
ELA	All Grades (Combined)	Students With Disabilities	2017-18	<10	*	*	*	*	*	*	*	*
ELA	All Grades (Combined)	Students With Disabilities	2018-19	16	<10	*	*	*	*	*	*	*
ELA	All Grades (Combined)	Students Without Disabilities	2017-18	121	<10	*	*	*	*	*	*	*
ELA	All Grades (Combined)	Students Without Disabilities	2018-19	120	<10	*	*	*	*	*	*	*

Annual Education Report Grand River Preparatory High School (09911)

MI-Access Students Who Took MI-Access, by Test Type

Subject	Grade	Student Group	School Year	Number Tested - M-STEP, SAT or MI-Access	Number Tested - Any MI-Access	Percent Tested - Any MI-Access	Number Tested - Functional Independence	Percent Tested - Functional Independence	Number Tested - Supported Independence	Percent Tested - Supported Independence	Number Tested - Participation	Percent Tested - Participation
ELA	All Grades (Combined)	Homeless	2017-18	<10	*	*	*	*	*	*	*	*
ELA	All Grades (Combined)	Not Homeless	2018-19	136	<10	*	*	*	*	*	*	*
ELA	All Grades (Combined)	Not Homeless	2017-18	123	<10	*	*	*	*	*	*	*
ELA	All Grades (Combined)	Not Foster Care	2018-19	136	<10	*	*	*	*	*	*	*
ELA	All Grades (Combined)	Not Foster Care	2017-18	126	<10	*	*	*	*	*	*	*
ELA	All Grades (Combined)	Not Military Connected	2018-19	136	<10	*	*	*	*	*	*	*
ELA	All Grades (Combined)	Not Military Connected	2017-18	126	<10	*	*	*	*	*	*	*
Mathematics	All Grades (Combined)	All Students	2017-18	126	<10	*	*	*	*	*	*	*
Mathematics	All Grades (Combined)	All Students	2018-19	136	<10	*	*	*	*	*	*	*
Mathematics	All Grades (Combined)	American Indian or Alaska Native	2017-18	<10	*	*	*	*	*	*	*	*
Mathematics	All Grades (Combined)	American Indian or Alaska Native	2018-19	<10	*	*	*	*	*	*	*	*
Mathematics	All Grades (Combined)	Asian	2018-19	<10	*	*	*	*	*	*	*	*

Annual Education Report Grand River Preparatory High School (09911)

MI-Access Students Who Took MI-Access, by Test Type

Subject	Grade	Student Group	School Year	Number Tested - M-STEP, SAT or MI-Access	Number Tested - Any MI-Access	Percent Tested - Any MI-Access	Number Tested - Functional Independence	Percent Tested - Functional Independence	Number Tested - Supported Independence	Percent Tested - Supported Independence	Number Tested - Participation	Percent Tested - Participation
Mathematics	All Grades (Combined)	Asian	2017-18	<10	*	*	*	*	*	*	*	*
Mathematics	All Grades (Combined)	Black or African American	2018-19	25	<10	*	*	*	*	*	*	*
Mathematics	All Grades (Combined)	Black or African American	2017-18	35	<10	*	*	*	*	*	*	*
Mathematics	All Grades (Combined)	Hispanic of Any Race	2017-18	47	<10	*	*	*	*	*	*	*
Mathematics	All Grades (Combined)	Hispanic of Any Race	2018-19	59	<10	*	*	*	*	*	*	*
Mathematics	All Grades (Combined)	Native Hawaiian or Other Pacific Islander	2018-19	<10	*	*	*	*	*	*	*	*
Mathematics	All Grades (Combined)	Two or More Races	2017-18	<10	*	*	*	*	*	*	*	*
Mathematics	All Grades (Combined)	Two or More Races	2018-19	<10	*	*	*	*	*	*	*	*
Mathematics	All Grades (Combined)	White	2018-19	35	<10	*	*	*	*	*	*	*
Mathematics	All Grades (Combined)	White	2017-18	32	<10	*	*	*	*	*	*	*
Mathematics	All Grades (Combined)	Female	2018-19	73	<10	*	*	*	*	*	*	*
Mathematics	All Grades (Combined)	Female	2017-18	69	<10	*	*	*	*	*	*	*

Annual Education Report Grand River Preparatory High School (09911)

MI-Access Students Who Took MI-Access, by Test Type

Subject	Grade	Student Group	School Year	Number Tested - M-STEP, SAT or MI-Access	Number Tested - Any MI-Access	Percent Tested - Any MI-Access	Number Tested - Functional Independence	Percent Tested - Functional Independence	Number Tested - Supported Independence	Percent Tested - Supported Independence	Number Tested - Participation	Percent Tested - Participation
Mathematics	All Grades (Combined)	Male	2018-19	63	<10	*	*	*	*	*	*	*
Mathematics	All Grades (Combined)	Male	2017-18	57	<10	*	*	*	*	*	*	*
Mathematics	All Grades (Combined)	Economically Disadvantaged	2017-18	69	<10	*	*	*	*	*	*	*
Mathematics	All Grades (Combined)	Economically Disadvantaged	2018-19	80	<10	*	*	*	*	*	*	*
Mathematics	All Grades (Combined)	Not Economically Disadvantaged	2018-19	56	<10	*	*	*	*	*	*	*
Mathematics	All Grades (Combined)	Not Economically Disadvantaged	2017-18	57	<10	*	*	*	*	*	*	*
Mathematics	All Grades (Combined)	English Learners	2018-19	34	<10	*	*	*	*	*	*	*
Mathematics	All Grades (Combined)	English Learners	2017-18	19	<10	*	*	*	*	*	*	*
Mathematics	All Grades (Combined)	Not English Learners	2018-19	102	<10	*	*	*	*	*	*	*
Mathematics	All Grades (Combined)	Not English Learners	2017-18	107	<10	*	*	*	*	*	*	*

Annual Education Report Grand River Preparatory High School (09911)

MI-Access Students Who Took MI-Access, by Test Type

Subject	Grade	Student Group	School Year	Number Tested - M-STEP, SAT or MI-Access	Number Tested - Any MI-Access	Percent Tested - Any MI-Access	Number Tested - Functional Independence	Percent Tested - Functional Independence	Number Tested - Supported Independence	Percent Tested - Supported Independence	Number Tested - Participation	Percent Tested - Participation
Mathematics	All Grades (Combined)	Not Migrant	2018-19	136	<10	*	*	*	*	*	*	*
Mathematics	All Grades (Combined)	Not Migrant	2017-18	126	<10	*	*	*	*	*	*	*
Mathematics	All Grades (Combined)	Students With Disabilities	2017-18	<10	*	*	*	*	*	*	*	*
Mathematics	All Grades (Combined)	Students With Disabilities	2018-19	16	<10	*	*	*	*	*	*	*
Mathematics	All Grades (Combined)	Students Without Disabilities	2017-18	121	<10	*	*	*	*	*	*	*
Mathematics	All Grades (Combined)	Students Without Disabilities	2018-19	120	<10	*	*	*	*	*	*	*
Mathematics	All Grades (Combined)	Homeless	2017-18	<10	*	*	*	*	*	*	*	*
Mathematics	All Grades (Combined)	Not Homeless	2017-18	123	<10	*	*	*	*	*	*	*
Mathematics	All Grades (Combined)	Not Homeless	2018-19	136	<10	*	*	*	*	*	*	*
Mathematics	All Grades (Combined)	Not Foster Care	2017-18	126	<10	*	*	*	*	*	*	*
Mathematics	All Grades (Combined)	Not Foster Care	2018-19	136	<10	*	*	*	*	*	*	*
Mathematics	All Grades (Combined)	Not Military Connected	2018-19	136	<10	*	*	*	*	*	*	*

Annual Education Report Grand River Preparatory High School (09911)

MI-Access Students Who Took MI-Access, by Test Type

Subject	Grade	Student Group	School Year	Number Tested - M-STEP, SAT or MI-Access	Number Tested - Any MI-Access	Percent Tested - Any MI-Access	Number Tested - Functional Independence	Percent Tested - Functional Independence	Number Tested - Supported Independence	Percent Tested - Supported Independence	Number Tested - Participation	Percent Tested - Participation
Mathematics	All Grades (Combined)	Not Military Connected	2017-18	126	<10	*	*	*	*	*	*	*
Science	All Grades (Combined)	All Students	2018-19	<10	*	*	*	*	*	*	*	*
Science	All Grades (Combined)	Asian	2018-19	<10	*	*	*	*	*	*	*	*
Science	All Grades (Combined)	Female	2018-19	<10	*	*	*	*	*	*	*	*
Science	All Grades (Combined)	Not Economically Disadvantaged	2018-19	<10	*	*	*	*	*	*	*	*
Science	All Grades (Combined)	Not English Learners	2018-19	<10	*	*	*	*	*	*	*	*
Science	All Grades (Combined)	Not Migrant	2018-19	<10	*	*	*	*	*	*	*	*
Science	All Grades (Combined)	Students With Disabilities	2018-19	<10	*	*	*	*	*	*	*	*
Science	All Grades (Combined)	Not Homeless	2018-19	<10	*	*	*	*	*	*	*	*
Science	All Grades (Combined)	Not Foster Care	2018-19	<10	*	*	*	*	*	*	*	*
Science	All Grades (Combined)	Not Military Connected	2018-19	<10	*	*	*	*	*	*	*	*
Social Studies	All Grades (Combined)	All Students	2017-18	125	<10	*	*	*	*	*	*	*

Annual Education Report Grand River Preparatory High School (09911)

MI-Access Students Who Took MI-Access, by Test Type

Subject	Grade	Student Group	School Year	Number Tested - M-STEP, SAT or MI-Access	Number Tested - Any MI-Access	Percent Tested - Any MI-Access	Number Tested - Functional Independence	Percent Tested - Functional Independence	Number Tested - Supported Independence	Percent Tested - Supported Independence	Number Tested - Participation	Percent Tested - Participation
Social Studies	All Grades (Combined)	All Students	2018-19	135	<10	*	*	*	*	*	*	*
Social Studies	All Grades (Combined)	American Indian or Alaska Native	2018-19	<10	*	*	*	*	*	*	*	*
Social Studies	All Grades (Combined)	American Indian or Alaska Native	2017-18	<10	*	*	*	*	*	*	*	*
Social Studies	All Grades (Combined)	Asian	2018-19	<10	*	*	*	*	*	*	*	*
Social Studies	All Grades (Combined)	Asian	2017-18	<10	*	*	*	*	*	*	*	*
Social Studies	All Grades (Combined)	Black or African American	2018-19	25	<10	*	*	*	*	*	*	*
Social Studies	All Grades (Combined)	Black or African American	2017-18	34	<10	*	*	*	*	*	*	*
Social Studies	All Grades (Combined)	Hispanic of Any Race	2018-19	59	<10	*	*	*	*	*	*	*
Social Studies	All Grades (Combined)	Hispanic of Any Race	2017-18	47	<10	*	*	*	*	*	*	*
Social Studies	All Grades (Combined)	Native Hawaiian or Other Pacific Islander	2018-19	<10	*	*	*	*	*	*	*	*
Social Studies	All Grades (Combined)	Two or More Races	2017-18	<10	*	*	*	*	*	*	*	*

Annual Education Report Grand River Preparatory High School (09911)

MI-Access Students Who Took MI-Access, by Test Type

Subject	Grade	Student Group	School Year	Number Tested - M-STEP, SAT or MI-Access	Number Tested - Any MI-Access	Percent Tested - Any MI-Access	Number Tested - Functional Independence	Percent Tested - Functional Independence	Number Tested - Supported Independence	Percent Tested - Supported Independence	Number Tested - Participation	Percent Tested - Participation
Social Studies	All Grades (Combined)	Two or More Races	2018-19	<10	*	*	*	*	*	*	*	*
Social Studies	All Grades (Combined)	White	2017-18	32	<10	*	*	*	*	*	*	*
Social Studies	All Grades (Combined)	White	2018-19	35	<10	*	*	*	*	*	*	*
Social Studies	All Grades (Combined)	Female	2017-18	69	<10	*	*	*	*	*	*	*
Social Studies	All Grades (Combined)	Female	2018-19	72	<10	*	*	*	*	*	*	*
Social Studies	All Grades (Combined)	Male	2017-18	56	<10	*	*	*	*	*	*	*
Social Studies	All Grades (Combined)	Male	2018-19	63	<10	*	*	*	*	*	*	*
Social Studies	All Grades (Combined)	Economically Disadvantaged	2017-18	68	<10	*	*	*	*	*	*	*
Social Studies	All Grades (Combined)	Economically Disadvantaged	2018-19	80	<10	*	*	*	*	*	*	*
Social Studies	All Grades (Combined)	Not Economically Disadvantaged	2018-19	55	<10	*	*	*	*	*	*	*

Annual Education Report Grand River Preparatory High School (09911)

MI-Access Students Who Took MI-Access, by Test Type

Subject	Grade	Student Group	School Year	Number Tested - M-STEP, SAT or MI-Access	Number Tested - Any MI-Access	Percent Tested - Any MI-Access	Number Tested - Functional Independence	Percent Tested - Functional Independence	Number Tested - Supported Independence	Percent Tested - Supported Independence	Number Tested - Participation	Percent Tested - Participation
Social Studies	All Grades (Combined)	Not Economically Disadvantaged	2017-18	57	<10	*	*	*	*	*	*	*
Social Studies	All Grades (Combined)	English Learners	2018-19	34	<10	*	*	*	*	*	*	*
Social Studies	All Grades (Combined)	English Learners	2017-18	19	<10	*	*	*	*	*	*	*
Social Studies	All Grades (Combined)	Not English Learners	2017-18	106	<10	*	*	*	*	*	*	*
Social Studies	All Grades (Combined)	Not English Learners	2018-19	101	<10	*	*	*	*	*	*	*
Social Studies	All Grades (Combined)	Not Migrant	2018-19	135	<10	*	*	*	*	*	*	*
Social Studies	All Grades (Combined)	Not Migrant	2017-18	125	<10	*	*	*	*	*	*	*
Social Studies	All Grades (Combined)	Students With Disabilities	2018-19	15	<10	*	*	*	*	*	*	*
Social Studies	All Grades (Combined)	Students With Disabilities	2017-18	<10	*	*	*	*	*	*	*	*
Social Studies	All Grades (Combined)	Students Without Disabilities	2017-18	120	<10	*	*	*	*	*	*	*
Social Studies	All Grades (Combined)	Students Without Disabilities	2018-19	120	<10	*	*	*	*	*	*	*

Annual Education Report Grand River Preparatory High School (09911)

MI -Access Students Who Took MI -Access, by Test Type

Subject	Grade	Student Group	School Year	Number Tested - M-STEP, SAT or MI-Access	Number Tested - Any MI-Access	Percent Tested - Any MI-Access	Number Tested - Functional Independence	Percent Tested - Functional Independence	Number Tested - Supported Independence	Percent Tested - Supported Independence	Number Tested - Participation	Percent Tested - Participation
Social Studies	All Grades (Combined)	Homeless	2017-18	<10	*	*	*	*	*	*	*	*
Social Studies	All Grades (Combined)	Not Homeless	2018-19	135	<10	*	*	*	*	*	*	*
Social Studies	All Grades (Combined)	Not Homeless	2017-18	122	<10	*	*	*	*	*	*	*
Social Studies	All Grades (Combined)	Not Foster Care	2017-18	125	<10	*	*	*	*	*	*	*
Social Studies	All Grades (Combined)	Not Foster Care	2018-19	135	<10	*	*	*	*	*	*	*
Social Studies	All Grades (Combined)	Not Military Connected	2017-18	125	<10	*	*	*	*	*	*	*
Social Studies	All Grades (Combined)	Not Military Connected	2018-19	135	<10	*	*	*	*	*	*	*

Annual Education Report Grand River Preparatory High School (09911)
Accountability Details Subject Data

Testing Group	Subject	State Tested Total	State Not Tested Total	State Percent Proficient	District Tested Total	District Not Tested Total	District Percent Proficient *	School Tested Total	School Not Tested Total	School Percent Proficient **
All Students	ELA	98.8%	1.2%	49.69%	99.3%	0.7%	N/A	99.3%	0.7%	45.93%
All Students	Mathematics	98.9%	1.1%	39.95%	99.3%	0.7%	N/A	99.3%	0.7%	23.70%
All Students	Science	98.1%	1.9%	N/A	100.0%	0.0%	N/A	100.0%	0.0%	N/A
All Students	Social Studies	98.0%	2.0%	31.23%	100.0%	0.0%	N/A	100.0%	0.0%	39.71%
American Indian or Alaska Native	ELA	98.2%	1.8%	41.43%	<10	<10	<10	<10	<10	<10
American Indian or Alaska Native	Mathematics	98.3%	1.7%	29.62%	<10	<10	<10	<10	<10	<10
American Indian or Alaska Native	Science	97.4%	2.6%	N/A	<10	<10	<10	<10	<10	<10
American Indian or Alaska Native	Social Studies	97.4%	2.6%	25.66%	<10	<10	<10	<10	<10	<10
Asian	ELA	99.3%	0.7%	71.37%	<10	<10	<10	<10	<10	<10
Asian	Mathematics	99.5%	0.5%	70.67%	<10	<10	<10	<10	<10	<10
Asian	Science	99.3%	0.7%	N/A	<10	<10	<10	<10	<10	<10
Asian	Social Studies	99.3%	0.7%	50.38%	<10	<10	<10	<10	<10	<10
Black or African American	ELA	98.0%	2.0%	25.07%	100.0%	0.0%	N/A	100.0%	0.0%	38.46%
Black or African American	Mathematics	98.0%	2.0%	14.94%	100.0%	0.0%	N/A	100.0%	0.0%	7.69%
Black or African American	Science	96.7%	3.3%	N/A	100.0%	0.0%	N/A	100.0%	0.0%	N/A
Black or African American	Social Studies	96.6%	3.4%	10.83%	100.0%	0.0%	N/A	100.0%	0.0%	46.15%
Hispanic of Any Race	ELA	98.7%	1.3%	38.01%	98.3%	1.7%	N/A	98.3%	1.7%	29.31%

Annual Education Report Grand River Preparatory High School (09911)

Accountability Details Subject Data

Testing Group	Subject	State Tested Total	State Not Tested Total	State Percent Proficient	District Tested Total	District Not Tested Total	District Percent Proficient *	School Tested Total	School Not Tested Total	School Percent Proficient **
Hispanic of Any Race	Mathematics	98.8%	1.2%	26.94%	98.3%	1.7%	N/A	98.3%	1.7%	13.79%
Hispanic of Any Race	Science	98.0%	2.0%	N/A	100.0%	0.0%	N/A	100.0%	0.0%	N/A
Hispanic of Any Race	Social Studies	98.0%	2.0%	19.37%	100.0%	0.0%	N/A	100.0%	0.0%	22.03%
Native Hawaiian or Other Pacific Islander	ELA	99.5%	0.5%	50.95%	<10	<10	<10	<10	<10	<10
Native Hawaiian or Other Pacific Islander	Mathematics	99.5%	0.5%	37.78%	<10	<10	<10	<10	<10	<10
Native Hawaiian or Other Pacific Islander	Science	99.2%	0.8%	N/A	<10	<10	<10	<10	<10	<10
Native Hawaiian or Other Pacific Islander	Social Studies	99.2%	0.8%	24.67%	<10	<10	<10	<10	<10	<10
Two or More Races	ELA	98.7%	1.3%	47.09%	<10	<10	<10	<10	<10	<10
Two or More Races	Mathematics	98.7%	1.3%	35.98%	<10	<10	<10	<10	<10	<10
Two or More Races	Science	97.9%	2.1%	N/A	<10	<10	<10	<10	<10	<10
Two or More Races	Social Studies	97.9%	2.1%	27.34%	<10	<10	<10	<10	<10	<10
White	ELA	99.0%	1.0%	56.44%	100.0%	0.0%	N/A	100.0%	0.0%	71.43%
White	Mathematics	99.1%	0.9%	46.59%	100.0%	0.0%	N/A	100.0%	0.0%	54.29%
White	Science	98.4%	1.6%	N/A	100.0%	0.0%	N/A	100.0%	0.0%	N/A
White	Social Studies	98.4%	1.6%	36.71%	100.0%	0.0%	N/A	100.0%	0.0%	60.00%
Female	ELA	98.9%	1.1%	53.92%	100.0%	0.0%	N/A	100.0%	0.0%	54.79%

Annual Education Report Grand River Preparatory High School (09911)
Accountability Details Subject Data

Testing Group	Subject	State Tested Total	State Not Tested Total	State Percent Proficient	District Tested Total	District Not Tested Total	District Percent Proficient *	School Tested Total	School Not Tested Total	School Percent Proficient **
Female	Mathematics	99.0%	1.0%	38.19%	100.0%	0.0%	N/A	100.0%	0.0%	24.66%
Female	Science	98.3%	1.7%	N/A	100.0%	0.0%	N/A	100.0%	0.0%	N/A
Female	Social Studies	98.2%	1.8%	28.84%	100.0%	0.0%	N/A	100.0%	0.0%	35.62%
Male	ELA	98.7%	1.3%	45.63%	98.4%	1.6%	N/A	98.4%	1.6%	35.48%
Male	Mathematics	98.7%	1.3%	41.64%	98.4%	1.6%	N/A	98.4%	1.6%	22.58%
Male	Science	97.9%	2.1%	N/A	100.0%	0.0%	N/A	100.0%	0.0%	N/A
Male	Social Studies	97.9%	2.1%	33.54%	100.0%	0.0%	N/A	100.0%	0.0%	44.44%
Economically Disadvantaged	ELA	98.4%	1.6%	34.98%	100.0%	0.0%	N/A	100.0%	0.0%	34.57%
Economically Disadvantaged	Mathematics	98.5%	1.5%	25.03%	100.0%	0.0%	N/A	100.0%	0.0%	13.58%
Economically Disadvantaged	Science	97.3%	2.7%	N/A	100.0%	0.0%	N/A	100.0%	0.0%	N/A
Economically Disadvantaged	Social Studies	97.2%	2.8%	17.58%	100.0%	0.0%	N/A	100.0%	0.0%	34.57%
English Learners	ELA	98.8%	1.2%	23.86%	97.1%	2.9%	N/A	97.1%	2.9%	12.12%
English Learners	Mathematics	99.1%	0.9%	22.89%	97.1%	2.9%	N/A	97.1%	2.9%	6.06%
English Learners	Science	98.2%	1.8%	N/A	100.0%	0.0%	N/A	100.0%	0.0%	N/A
English Learners	Social Studies	98.3%	1.7%	6.54%	100.0%	0.0%	N/A	100.0%	0.0%	11.76%
Migrant	ELA	N/A	N/A	18.89%	N/A	N/A	N/A	N/A	N/A	N/A
Migrant	Mathematics	N/A	N/A	13.88%	N/A	N/A	N/A	N/A	N/A	N/A
Migrant	Social Studies	N/A	N/A	7.33%	N/A	N/A	N/A	N/A	N/A	N/A

Annual Education Report Grand River Preparatory High School (09911)
Accountability Details Subject Data

Testing Group	Subject	State Tested Total	State Not Tested Total	State Percent Proficient	District Tested Total	District Not Tested Total	District Percent Proficient *	School Tested Total	School Not Tested Total	School Percent Proficient **
Students With Disabilities	ELA	97.5%	2.5%	24.82%	93.3%	6.7%	N/A	93.3%	6.7%	0.00%
Students With Disabilities	Mathematics	97.9%	2.1%	18.51%	93.3%	6.7%	N/A	93.3%	6.7%	0.00%
Students With Disabilities	Science	95.3%	4.7%	N/A	100.0%	0.0%	N/A	100.0%	0.0%	N/A
Students With Disabilities	Social Studies	95.8%	4.2%	11.95%	100.0%	0.0%	N/A	100.0%	0.0%	13.33%
Homeless	ELA	96.3%	3.7%	28.30%	N/A	N/A	N/A	N/A	N/A	N/A
Homeless	Mathematics	96.5%	3.5%	18.28%	N/A	N/A	N/A	N/A	N/A	N/A
Homeless	Science	94.1%	5.9%	N/A	N/A	N/A	N/A	N/A	N/A	N/A
Homeless	Social Studies	94.1%	5.9%	13.17%	N/A	N/A	N/A	N/A	N/A	N/A
Foster Care	ELA	N/A	N/A	27.54%	N/A	N/A	N/A	N/A	N/A	N/A
Foster Care	Mathematics	N/A	N/A	17.90%	N/A	N/A	N/A	N/A	N/A	N/A
Foster Care	Social Studies	N/A	N/A	11.85%	N/A	N/A	N/A	N/A	N/A	N/A
Military Connected	ELA	N/A	N/A	54.39%	N/A	N/A	N/A	N/A	N/A	N/A
Military Connected	Mathematics	N/A	N/A	41.32%	N/A	N/A	N/A	N/A	N/A	N/A
Military Connected	Social Studies	N/A	N/A	30.54%	N/A	N/A	N/A	N/A	N/A	N/A

Annual Education Report Grand River Preparatory High School (09911)
 High School Graduation: Four-Year Adjusted Cohort Rate

Student Group	Baseline Data (2016)	Most Recent Results (2018)	Interim Objective (2020)	Interim Objective (2022)	Long-Term Target (2025)
All Students	79.79%	86.92%	86.30%	89.56%	94.44%
Asian	90.77%	100.00%	92.40%	93.22%	94.44%
Black or African American	67.31%	74.29%	79.37%	85.40%	94.44%
Hispanic of Any Race	72.07%	82.22%	82.01%	86.99%	94.44%
Two or More Races	74.74%	<10	83.50%	87.88%	94.44%
White	83.48%	100.00%	88.35%	90.79%	94.44%
Economically Disadvantaged	67.48%	82.09%	79.46%	85.46%	94.44%
English Learners	72.14%	<10	82.05%	87.01%	94.44%
Students With Disabilities	57.12%	<10	73.71%	82.00%	94.44%

Annual Education Report Grand River Preparatory High School (09911)

Percentage of English Learners Making Progress in Achieving English Language Proficiency

Student Group	Baseline Data (2016)	Most Recent Results (2019)	Interim Objective (2020)	Interim Objective (2022)	Long-Term Target (2025)
English Learners	46.41%	56.77%	52.12%	54.98%	59.26%

Annual Education Report Grand River Preparatory High School (09911)
Accountability Details Attendance Data

Student Group	Statewide	District	School
All Students	80.30%	N/A	75.47%

* All data based on students enrolled for a full academic year.

Annual Education Report Grand River Preparatory High School (09911)

Academic Proficiency

Student Group	Student Group	Baseline Data (2016)	Most Recent Results (2019)	Interim Objective (2020)	Interim Objective (2022)	Long-Term Target (2025)
All Students	ELA	49.14%	45.93%	53.97%	56.38%	60.00%
Economically Disadvantaged	ELA	32.83%	34.57%	44.90%	50.94%	60.00%
English Learners	ELA	22.25%	12.12%	39.03%	47.42%	60.00%
Students With Disabilities	ELA	18.87%	0.00%	37.15%	46.29%	60.00%
Black or African American	ELA	23.26%	38.46%	39.59%	47.75%	60.00%
American Indian or Alaska Native	ELA	40.78%	<10	49.32%	53.59%	60.00%
Asian	ELA	70.34%	<10	70.34%	70.34%	60.00%
Native Hawaiian or Other Pacific Islander	ELA	53.54%	<10	56.41%	57.85%	60.00%
Hispanic of Any Race	ELA	36.15%	29.31%	46.75%	52.05%	60.00%
Two or More Races	ELA	46.76%	<10	52.64%	55.59%	60.00%
White	ELA	56.05%	71.43%	57.81%	58.68%	60.00%
All Students	Mathematics	37.55%	23.70%	41.99%	44.22%	47.55%
Economically Disadvantaged	Mathematics	21.92%	13.58%	33.31%	39.01%	47.55%
English Learners	Mathematics	21.04%	6.06%	32.82%	38.71%	47.55%
Students With Disabilities	Mathematics	15.57%	0.00%	29.78%	36.89%	47.55%
Black or African American	Mathematics	12.43%	7.69%	28.04%	35.85%	47.55%
American Indian or Alaska Native	Mathematics	28.50%	<10	36.97%	41.20%	47.55%
Asian	Mathematics	68.19%	<10	68.19%	68.19%	47.55%

Annual Education Report Grand River Preparatory High School (09911)

Academic Proficiency

Student Group	Student Group	Baseline Data (2016)	Most Recent Results (2019)	Interim Objective (2020)	Interim Objective (2022)	Long-Term Target (2025)
Native Hawaiian or Other Pacific Islander	Mathematics	41.85%	<10	44.38%	45.65%	47.55%
Hispanic of Any Race	Mathematics	23.63%	13.79%	34.26%	39.58%	47.55%
Two or More Races	Mathematics	34.42%	<10	40.26%	43.17%	47.55%
White	Mathematics	43.95%	54.29%	45.55%	46.35%	47.55%

Annual Education Report Grand River Preparatory High School (09911)

Accountability Index Data

School Name	Proficiency Index Value	Growth Index Value	Graduation Rate Index Value	EL Progress Index Value	School Quality/Student Success Index Value	General Participation Index Value	EL Participation Index Value	Overall Index Value	Accountability Status	Reason for Identification
Grand River Preparatory High School	52.34	58.50	92.62	56.77	85.77	100.00	100.00	65.02	N/A	N/A

Annual Education Report Grand River Preparatory High School (09911)

Professional Qualifications of All Public Elementary and Secondary School Teachers

	Other	B.A.	M.A.	P.H.D.
Grand River Preparatory High School (09911)	0	26	9	0

Professional Qualifications are defined by the State and may include information such as the degrees of public school teachers (e.g., percentage of teachers with Bachelors Degrees or Masters Degrees) or the percentage of fully certified teachers

Inexperienced Teachers

	Total Number of Staffing Group	Number Inexperienced	Percent Inexperienced	Count High-Poverty Schools	Percent High-Poverty Schools	Count Low-Poverty Schools	Percent Low-Poverty Schools
Grand River Preparatory High School (09911)	31.33	13.20	42.1%	N/A	N/A	N/A	N/A

Inexperienced Principals and Other School Leaders

	Total Number of Staffing Group	Number Inexperienced	Percent Inexperienced	Count High-Poverty Schools	Percent High-Poverty Schools	Count Low-Poverty Schools	Percent Low-Poverty Schools
Grand River Preparatory High School (09911)	2.41	0.00	0.0%	N/A	N/A	N/A	N/A

Teacher Emergency or Provisional Credentials

	Total Number of Teachers	Number with Emergency or Provisional Credentials	Percent with Emergency or Provisional Credentials	Count High-Poverty Schools	Percent High-Poverty Schools	Count Low-Poverty Schools	Percent Low-Poverty Schools
Grand River Preparatory High School (09911)	31.33	0.00	0.0%	N/A	N/A	N/A	N/A

Out-of-Field Teachers

	Total Number of Teachers	Number of Out-of-Field Teachers	Percent of Out-of-Field Teachers	Count High-Poverty Schools	Percent High-Poverty Schools	Count Low-Poverty Schools	Percent Low-Poverty Schools
Grand River Preparatory High School (09911)	31.33	1.00	3.2%	N/A	N/A	N/A	N/A

Annual Education Report Grand River Preparatory High School (09911)

LEA School Improvement Fund Recipients

District Name	School Name	Type of School	Funds Received	Strategies Implemented
---------------	-------------	----------------	----------------	------------------------

No Data to Display

Annual Education Report Grand River Preparatory High School (09911)
NAEP Grade 4 Math

	Percent of Students	Percent below Basic	Percent Basic	Percent Proficient	Percent Advanced
All Students	100	24	41	29	7
Male	51	22	40	30	8
Female	49	25	42	28	5
National Lunch Program Eligibility	51	36	44	18	2
Eligible	49	12	37	40	11
Not Eligible	‡	‡	‡	‡	‡
Info not available					
Race/Ethnicity					
White	65	15	41	36	8
Black or African American	17	51	39	9	1
Hispanic	9	34	45	17	4
Asian	3	9	32	37	22
Native Hawaiian or Other Pacific Islander	‡	‡	‡	‡	‡
American Indian or Alaska Native	‡	‡	‡	‡	‡
Two or More Races	5	29	42	22	7
Student classified as having a disability	11	60	29	10	1
SD	89	19	42	31	7
Not SD					
Student is an English Language Learner	10	37	46	14	2
ELL	90	22	40	31	7
Not ELL					

‡ Reporting Standards not met. Note: Observed differences are not necessarily statistically significant. Detail may not sum to total because of rounding. SOURCE: U.S. Department of Education. Institute for Education Sciences. National Center for Education Statistics. National Assessment of Educational Progress (NAEP) 2019 Mathematics Achievement.

Regardless of location selected, data are displayed at the state level only.

Annual Education Report Grand River Preparatory High School (09911)
NAEP Grade 8 Math

	Percent of Students	Percent below Basic	Percent Basic	Percent Proficient	Percent Advanced
All Students	32	68	31	9	
Male	51	33	67	31	10
Female	49	31	69	31	7
National Lunch Program Eligibility					
Eligible	4	48	52	16	3
Not Eligible	55	19	81	43	13
Info not available	‡	‡	‡	‡	‡
Race/Ethnicity					
White	70	25	75	37	11
Black or African American	15	64	36	9	1
Hispanic	8	41	59	16	2
Asian	3	14	86	52	21
American Indian or Alaska Native	‡	‡	‡	‡	‡
Native Hawaiian or Other Pacific Islander	‡	‡	‡	‡	‡
Two or More Races	4	39	61	24	4
Student classified as having a disability					
SD	10	75	25	5	0
Not SD	90	27	73	34	9
Student is an English Language Learner					
ELL	6	60	40	8	1
Not ELL	94	30	70	32	9

‡ Reporting Standards not met. NOTE: Observed differences are not necessarily statistically significant. Detail may not sum to total because of rounding. SOURCE: U.S. Department of Education. Institute for Education Sciences. National Center for Education Statistics. National Assessment of Educational Progress (NAEP) 2019 Mathematics Achievement.

Regardless of location selected, data are displayed at the state level only.

Annual Education Report Grand River Preparatory High School (09911)
NAEP Grade 4 Reading

	Percent of Students	Percent below Basic	Percent Basic	Percent Proficient	Percent Advanced
All Students	100	36	64	32	7
Male	51	40	60	28	6
Female	49	32	68	36	9
National Lunch Program Eligibility	53	49	51	20	3
Eligible	47	21	79	45	13
Not Eligible	‡	‡	‡	‡	‡
Info not available					
Race/Ethnicity					
White	65	29	71	37	9
Black or African American	18	58	42	15	2
Hispanic	9	50	50	18	2
Asian	3	18	82	44	15
‡	‡	‡	‡	‡	‡
American Indian or Alaska Native	‡	‡	‡	‡	‡
5	33	67	35	8	
Native Hawaiian or Other Pacific Islander					
Two or More Races					
Student classified as having a disability	10	74	26	10	1
SD	90	31	69	34	8
Not SD					
Student is an English Language Learner	11	57	43	14	3
ELL	89	33	67	34	8
Not ELL					

Rounds to zero

‡ Reporting Standards not met. NOTE: Observed differences are not necessarily statistically significant. Detail may not sum to total because of rounding. SOURCE: U.S. Department of Education, Institute of Education Sciences, National Center for Education Statistics, National Assessment of Educational Progress (NAEP), 2019 Reading Assessment.

Regardless of location selected, data are displayed at the state level only.

Annual Education Report Grand River Preparatory High School (09911)
NAEP Grade 8 Reading

	Percent of Students	Percent below Basic	Percent Basic	Percent Proficient	Percent Advanced
All Students	100	27	73	31	3
Male	51	32	68	26	2
Female	49	21	79	37	3
National Lunch Program Eligibility	47	39	61	19	1
Eligible	52	15	85	43	4
Not Eligible	‡	‡	‡	‡	‡
Info not available					
Race/Ethnicity					
White	70	22	78	35	3
Black or African American	15	48	52	12	0
Hispanic	8	36	64	22	1
Asian/Native Hawaiian or Pacific Islander	3	14	86	56	6
Two or More Races	‡	‡	‡	‡	‡
American Indian or Alaska Native	‡	‡	‡	‡	‡
Islander	4	23	77	40	5
Student classified as having a disability					
SD	11	71	29	5	0
Not SD	89	21	79	35	3
Student is an English Language Learner					
ELL	6	57	43	6	0
Not ELL	94	25	75	33	3

Rounds to zero

‡ Reporting Standards not met. NOTE: Observed differences are not necessarily statistically significant. Detail may not sum to total because of rounding. SOURCE: U.S. Department of Education, Institute of Education Sciences, National Center for Education Statistics, National Assessment of Educational Progress (NAEP), 2019 Reading Assessment.

Regardless of location selected, data are displayed at the state level only.

Annual Education Report Grand River Preparatory High School (09911)
 NAEP Participation Data

Grade	Subject	Participation Rate for Students with Disabilities	Standard Error	Participation Rate for Limited English Proficient Students	Standard Error
4	Math	86.9	2.25	97	0.97
	Reading	85.4	2.57	98	1.04
8	Math	81.9	2.48	95	1.79
	Reading	83.3	2.41	91	3.97

The National Assessment of Educational Progress (NAEP) is periodically administered by the U.S. Department of Education based on assessments administered to samples of students in each state. Federal regulations require the display of state level NAEP data on the Annual Education Report. These data represent the performance of the most recent sample of Michigan students on the NAEP.